

STAGE

ปั๊มน้ำบาดาล สแตนเลส



พร้อมระบบสับตัดทรายชั้นเยี่ยม



Italia

STAGE

Performance Data

4" Stainless Steel Submersible Pump

MODEL	STAGE	POWER [hp]	l/min m³/hr	CAPACITY																				OUTLET [inch]
				5	10	15	20	25	30	35	40	45	50	60	70	80	90	100	120	140	160	180	200	
				0.3	0.6	0.9	1.2	1.5	1.8	2.1	2.4	2.7	3	3.6	4.2	4.8	5.4	6	7.2	8.4	9.6	10.8	12	
HEAD in Meter [m]																								
SST-0526	26	1.0	173	160	141	117	81	39															1.1/4	
SST-2014	14	1.0	92			86	83	79	74	67	60	52	42										1.1/4	
SST-2020	20	1.5	139			131	127	120	111	101	90	75	60										1.1/4	
SST-2311	11	1.0	72				68	66	64	61	58	54	49	38	26								1.1/4	
SST-2316	16	1.5	106				101	98	95	89	83	77	70	54	33								1.1/4	
SST-2321	21	2.0	142				135	132	127	122	115	108	100	79	49								1.1/4	
SST-2332	32	3.0	208				200	194	187	177	165	152	138	104	62								1.1/4	
SST-2809	09	1.0	59					55	54	52	51	49	47	43	37	28	20	10					1.1/4	
SST-2814	14	1.5	93					87	86	83	81	79	76	68	58	47	33	20					1.1/4	
SST-2818	18	2.0	120					113	111	108	105	102	98	88	75	60	42	25					1.1/4	
SST-2827	27	3.0	175					164	161	157	152	147	141	127	109	87	61	35					1.1/4	
SST-2844	44	5.0	231					217	212	208	202	196	189	170	149	120	87	50					1.1/4	
SST-2848	48	5.5	285					266	260	254	248	238	229	203	172	139	100	59					1.1/4	
SST-3508	08	1.0	51						48	47	46	45	42	39	34	29	23	10					1.1/2	
SST-3512	12	1.5	77						72	71	69	68	63	58	50	41	32	12					1.1/2	
SST-3516	16	2.0	102						98	97	95	92	87	80	70	60	48	20					1.1/2	
SST-3524	24	3.0	151						144	141	138	135	126	115	102	88	69	30					1.1/2	
SST-3540	40	5.0	253						242	238	233	228	215	198	179	155	129	66					1.1/2	
SST-3544	44	5.5	278						264	260	254	248	232	213	192	167	139	71					1.1/2	
SST-4507	07	1.0	42										36	34	32	30	28	25	19	11			2	
SST-4510	10	1.5	62										53	51	48	45	41	38	29	18			2	
SST-4514	14	2.0	90										77	74	71	68	63	53	46	28			2	
SST-4520	20	3.0	125										107	102	97	92	86	80	62	40			2	
SST-4534	34	5.0	208										178	170	162	153	143	132	103	66			2	
SST-5006	06	1.5	39												36	35	34	32	29	26	22	17	2	
SST-5008	08	2.0	52												48	47	46	43	39	35	29	24	2	
SST-5013	13	3.0	82												75	73	71	66	59	50	40	30	2	
SST-5021	21	5.0	132												117	114	111	103	93	82	68	52	2	

MODEL	STAGE	POWER [hp]	l/min m³/hr	CAPACITY																				OUTLET [inch]
				80	90	100	120	140	160	180	200	220	240	260	280	300	320	340	360	380	400	450	500	
				4.8	5.4	6.0	7.2	8.4	9.6	10.8	12	13.2	14.4	15.6	16.8	18	19.2	20.4	21.6	22.8	24	27	30	
HEAD in Meter [m]																								
SST-6507	07	1.5	41	35	34	33	32	29	26	23	18	14	8										2	
SST-6510	10	2.0	58	49	48	47	44	41	37	32	27	20	13										2	
SST-6514	14	3.0	83	71	69	67	63	58	54	48	40	31	20										2	
SST-6522	22	5.0	131	110	107	104	98	91	82	71	58	45	30										2	
SST-7007	07	2.0	45				37	36	33	31	28	25	22	18	14								2	
SST-7010	10	3.0	64				54	52	48	44	41	36	32	26	20								2	
SST-7017	17	5.0	107				90	86	80	74	67	59	51	42	32								2	
SST-7019	19	5.5	120				102	97	91	89	76	68	58	48	37								2	
SST-7026	26	7.5	163				136	129	120	111	100	75	75	61	48								2	
SST-9008	08	3.0	51					41	39	37	35	33	31	29	27	24	22	20	17	14	12		2	
SST-9013	13	5.0	81					67	64	61	58	55	52	48	45	41	38	34	30	26	22		2	
SST-9015	15	5.5	97					79	76	73	69	66	63	58	54	50	46	41	36	32	27		2	
SST-9020	20	7.5	125					102	98	94	89	84	79	74	70	65	60	54	48	43	37		2	

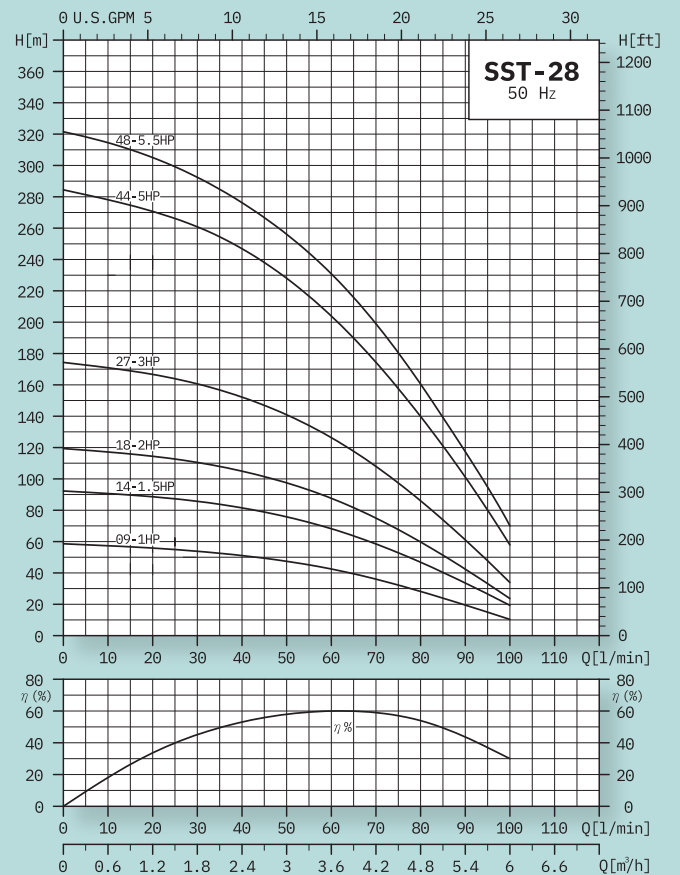
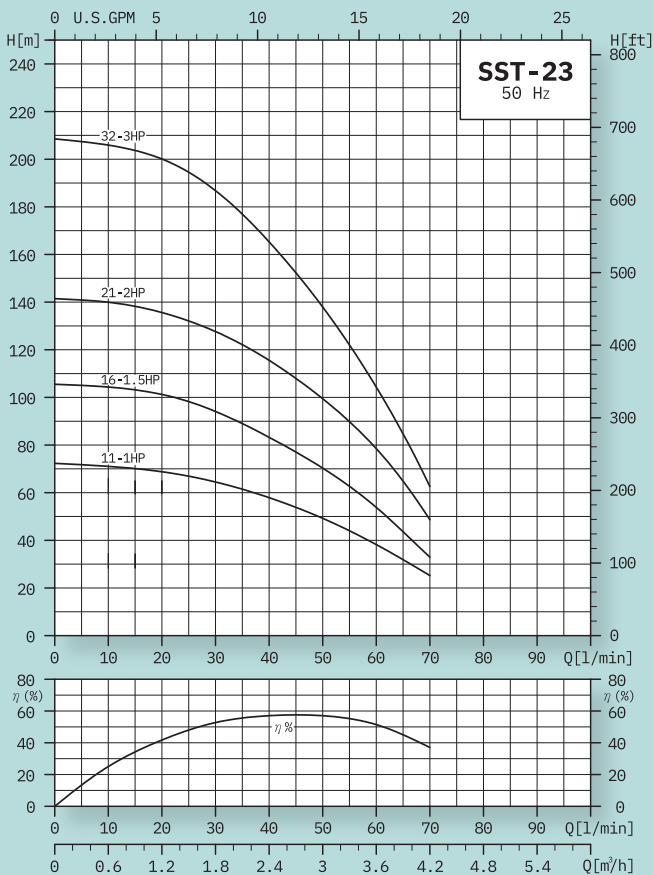
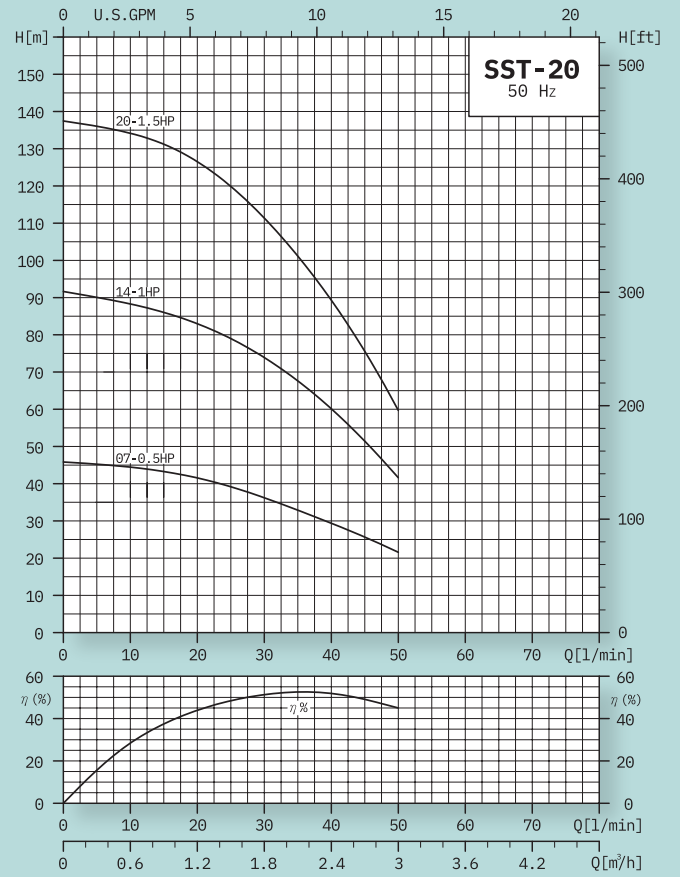
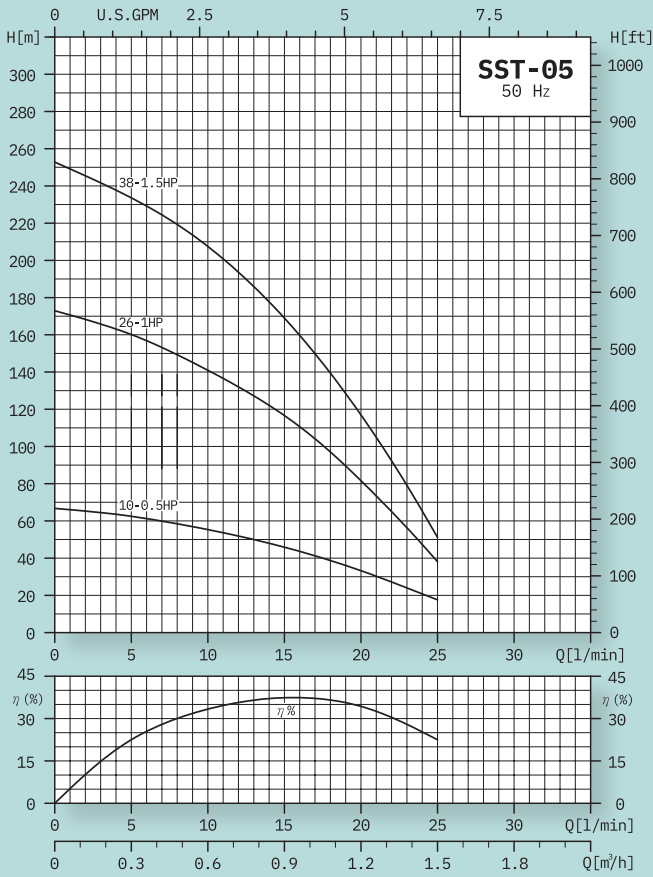
6" Stainless Steel Submersible Pump | 4" Motor

HIGH CAP MODEL	STAGE	POWER [hp]	l/min m³/hr	CAPACITY													OUTLET [inch]
				100	200	300	400	500	600	700	800	900	1000	1100	1200	1300	
				6.0	12	18	24	30	36	42	48	54	60	66	72	78	
HEAD in Meter [m]																	
AST-2204	4	3.0	43	42	38	29	18										3
AST-2206	6	5.5	64	63	56	43	27										3
AST-3303	3	3.0	33	33	31	29	26	22	17								3
AST-3304	4	5.0	43	43	41	38	34	28	23								3
AST-3306	6	7.5	67	67	62	58	52	45	36								3
AST-5503C	3	5.5	35		35	32	29	27	24	22	19	14	10				3
AST-5503	3	7.5	40		40	38	35	33	29	27	23	18	14				3
AST-6602	2	5.5	26			26	24	22	20	18	16	14	13	11	8	5	4
AST-6603	3	7.5	40			40	38	36	32	28	26	24	21	18	14	10	4

Performance Curve



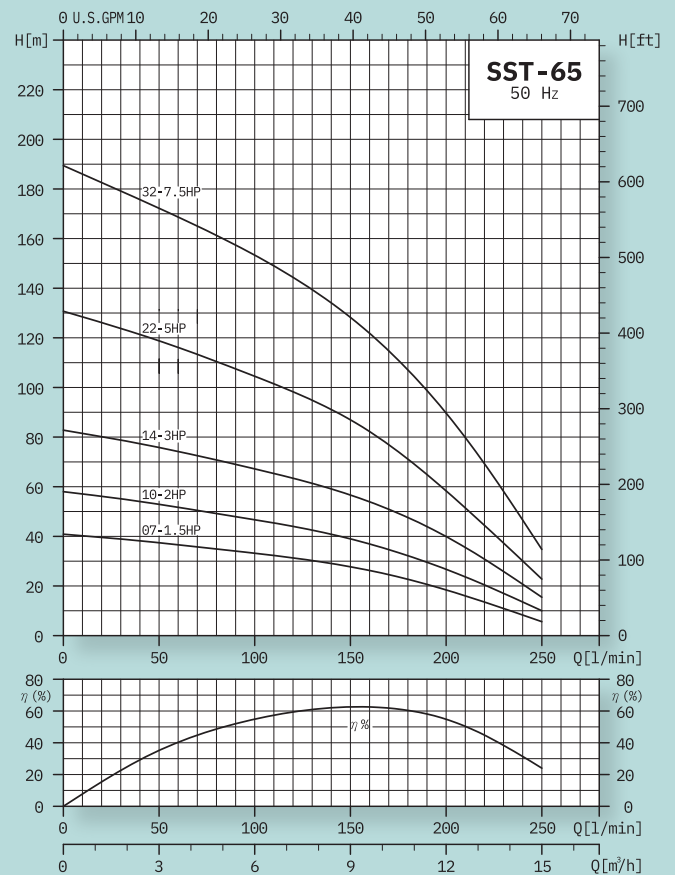
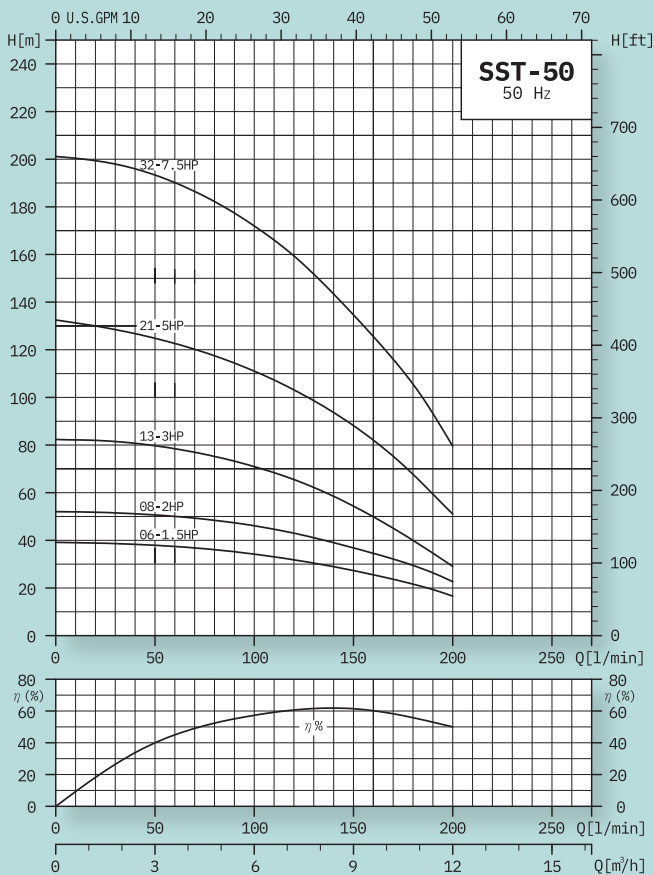
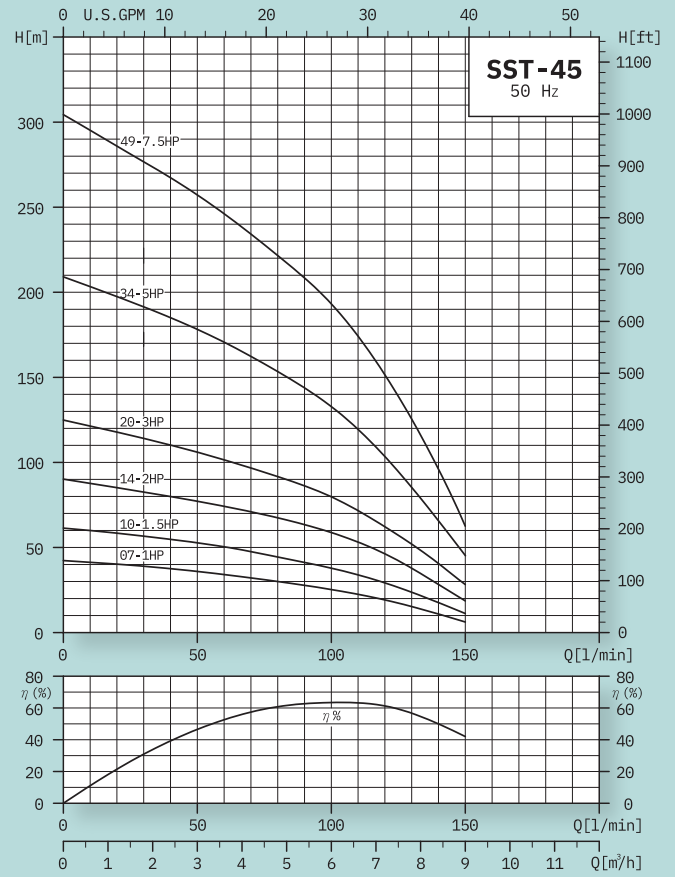
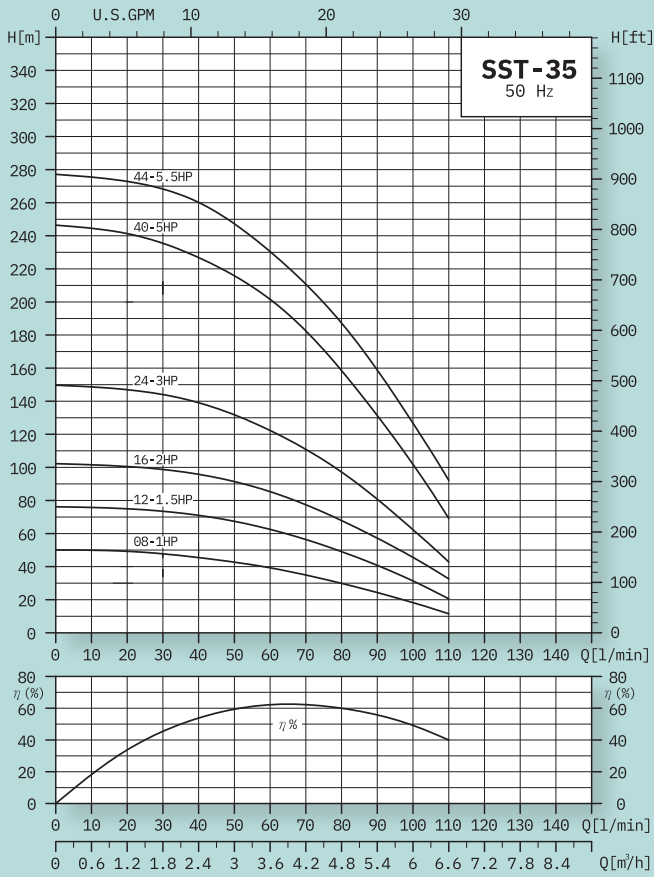
4" Stainless Steel Submersible Pump



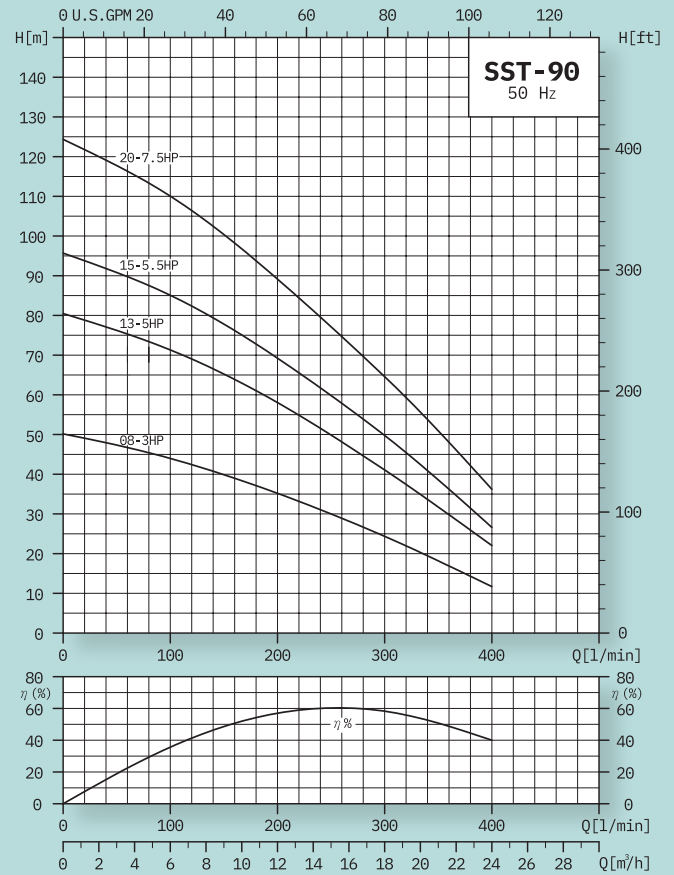
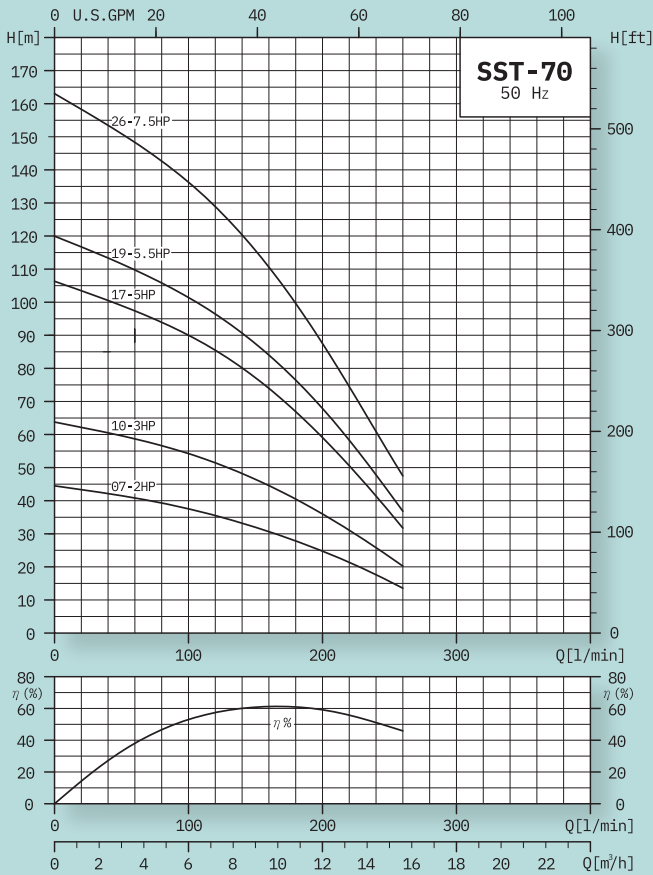
Performance Curve



4" Stainless Steel Submersible Pump



4" Stainless Steel Submersible Pump



4" SUBMERSIBLE PUMP



SST

Construction Features

- | | |
|------------------|---|
| Discharge Head | Made in AISI 304 stainless steel |
| Motor Adaptor | NEMA standard |
| Impeller Bowls | Made in AISI 304 stainless steel
Maximizing wear from abrasion. |
| Strainer | Made in AISI 304 stainless steel |
| Pump Shaft | Hex bar made in AISI 304 stainless steel |
| Pump Body | Covered by 1.5mm thick AISI 304. |
| Bearing | Made in Polyacetal for strong wear. |
| Impeller | Floating type made with Noryl®
for a superior sand handling
together with glass filled polycarbonate
diffusers make super strong pumps |
| Shaft Coupling | Made in AISI 304 stainless steel |
| Non-Return valve | Prevent any back flow of water or water hammer |



AST

6" SUBMERSIBLE PUMP [4" MOTOR]

Construction Features

Stainless steel construction designed and built for years of trouble free operation
Designed and built to operate in difficult conditions.

All metal parts are made of AISI 304 or AISI 316 stainless steel, except for the shafts, which are made of AISI 431 or AISI 316 stainless steel.

ALL STAINLESS STEEL PUMP



4" HIGH THRUST SUBMERSIBLE MOTOR | 50Hz

Operating Limits

Degree of Protection	IP 68
Insulation Class	F
Voltage Tolerance	-10% / +10%
Liquid Temperature	0°C - 35°C
Max. Start / Hour	30
Max Immersion Depth	200 m

Construction Features

Parts in Contact with water	All made in AISI 304 stainless steel
External Sleeve and Bottom	Made in AISI 304L (Low carbon)
Upper Bracket	Made in cast iron and AISI 304 Stainless Steel
Mechanical Seal	Made in Graphite / Ceramic
Ball Bearing	Duty over-sized to ensure a long lasting motor
Stator	With 24 slots, airtight sealed. Highly refined oil, suitable to be used in drinking water. (F.D.A., Food and Drug Administration, approved).
Removable Power Cable	Perfectly sealing even in the most critical conditions. Complies with all major standards on the use in Drinking water (KTW, ACS, Wras)
Shaft	Made in carbon-steel alloys in the rotor area, DUPLEX for motor bigger than 3.0 HP.
Sand Protection Filter	Special filter that stops any impurities.
100% Tested	All motors are tested at the end of the line. Seal and electrical checks are carried out on all motor.

SUPER BOX

Feature

Suitable for any single-phase submersible motor 220V 50Hz up to 5.5HP. The Super Box consists of many protection equipment that helps in preventing electrical system error or fault which is the main problem that damages the submersible motor.

On/Off Switch: Installed inside all control boxes to prevent humidity and dust.

Breaker (Manual Reset): Interrupts the abnormal or fault current, which protect the electrical system from damage

Overload: Used to prevent power supply overload.

Capacitors: They provide high torque and stable operation. There are 2 types of capacitor per details listed below:

- One built-in capacitor that functions as Starting and Running operation.
- Separate capacitor, one functions as Starting, one as Running, and another as Supporting

**Remark - The total number of capacitor inside the control box will be used differently which according to Horse Power of each control box.

Magnetic Contactor: Used for over-current protection.

Fuse Control: Used to prevent over-heating. The fuse will automatically shut down before the motor burnout.

Phase Protection: It will be activated when the power supply has dramatically dropped.

SUPER BOX

